

LOVING LINES – CAL

PART 5

DESIGNED BY

MARJOLEIN KOOIMAN



PATTERN - INFO

This is the lay-out of both blankets. The numbers are the numbers of the parts. As you can see most squares are made 4 times except the last middle square of the large blanket. When I release part 5, I also release the border for **both** of the blankets.

My blankets are squares, but the small blanket can be made as rectangle by making square 5 and 6 two times.

The most important thing is **COUNTING** your stitches between the corners, because a mistake can be easily made and will be found when working the next row. In the beginning it is not much work to rip out a round, but there are rounds of 150+ stitches. So count your stitches then you will find a mistake just before you need to make the next corner.

In most parts you will find all 4 triangles. Look careful, the pattern is the same for the first 16 rows of every triangle and all the squares, but after that it can be different for every triangle. **Make sure you do not mess up the order of the triangles!!**

The chart is divided over 2 pages and in color. I used colors to make it easier to 'read' the pattern. If you have a black/white printer it is no problem because the colors have enough contrast. The numbers in the chart will tell you how many repeats you need to make of the stitch that is on either side of it.

1	2	3	1
3	4	4	2
2	4	4	3
1	3	2	1

1	2	5	3	1
3	4	6	4	2
5	6	7	6	5
2	4	6	4	3
1	3	5	2	1

RETURN PASS

Attaching : Slide and turn, PT 1 loop,
slide and turn, PT 2 loops until you have 5 loops on the hook, slide and turn until the last row.

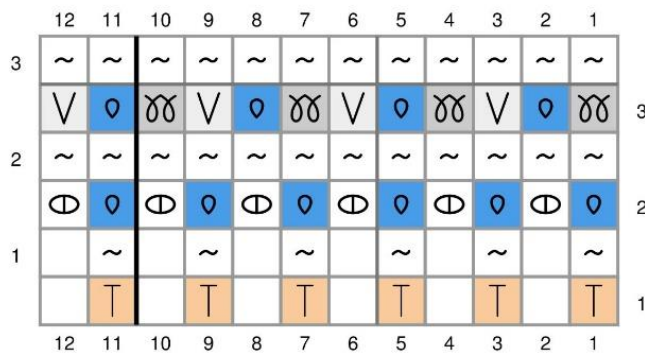
THE PATTERN

You need to make this square 4 times.

If you need to start a new skein for the Return Pass half way your square it needs a little planning! You need to do it when you make the first half of the corner. If you do it anywhere else you will notice it!

HOW TO START THE SQUARE

Here is a short instruction for the start of the square. Complete instruction can be found in the tutorial.



Round 1

Magic circle (1 loop on the hook) 5TES (6 loops on the hook)

Round 2

Close the magic circle

6x (TKS, TFS)

Round 3

(2nd half corner), TKS, (1st half corner),

(2nd half corner), TKS, (1st half corner),

(2nd half corner), TKS, (1st half corner),

(2nd half corner), TKS, (1st half corner)

On the last 2 pages you will find the charts from row 4 and up. Right below you will find the written instructions for the complete square.

Round 4

(2nd half corner), 3TKS, (1st half corner),

(2nd half corner), 3TKS, (1st half corner),

(2nd half corner), 3TKS, (1st half corner),

(2nd half corner), 3TKS, (1st half corner)

Round 5

(2nd half corner), TKS, TRS, TKS, TRS, TKS, (1st half corner),
(2nd half corner), TKS, TRS, TKS, TRS, TKS, (1st half corner),
(2nd half corner), TKS, TRS, TKS, TRS, TKS, (1st half corner),
(2nd half corner), TKS, TRS, TKS, TRS, TKS, (1st half corner)

Round 6

(2nd half corner), TKS, 2TRS, TKS, 2TRS, TKS, (1st half corner),
(2nd half corner), TKS, 2TRS, TKS, 2TRS, TKS, (1st half corner),
(2nd half corner), TKS, 2TRS, TKS, 2TRS, TKS, (1st half corner),
(2nd half corner), TKS, 2TRS, TKS, 2TRS, TKS, (1st half corner)

Round 7

(2nd half corner), TKS, 2TRS, 3TKS, 2TRS, TKS, (1st half corner),
(2nd half corner), TKS, 2TRS, 3TKS, 2TRS, TKS, (1st half corner),
(2nd half corner), TKS, 2TRS, 3TKS, 2TRS, TKS, (1st half corner),
(2nd half corner), TKS, 2TRS, 3TKS, 2TRS, TKS, (1st half corner)

Round 8

(2nd half corner), TKS, 2TRS, 5TKS, 2TRS, TKS, (1st half corner),
(2nd half corner), TKS, 2TRS, 5TKS, 2TRS, TKS, (1st half corner),
(2nd half corner), TKS, 2TRS, 5TKS, 2TRS, TKS, (1st half corner),
(2nd half corner), TKS, 2TRS, 5TKS, 2TRS, TKS, (1st half corner)

Round 9

(2nd half corner), TKS, 2TRS, 7TKS, 2TRS, TKS, (1st half corner),
(2nd half corner), TKS, 2TRS, 7TKS, 2TRS, TKS, (1st half corner),
(2nd half corner), TKS, 2TRS, 7TKS, 2TRS, TKS, (1st half corner),
(2nd half corner), TKS, 2TRS, 7TKS, 2TRS, TKS, (1st half corner)

Round 10

(2nd half corner), TKS, 2TRS, TKS, 2TRS, 3TKS, 2TRS, TKS, 2TRS, TKS, (1st half corner),
(2nd half corner), TKS, 2TRS, TKS, 2TRS, 3TKS, 2TRS, TKS, 2TRS, TKS, (1st half corner),
(2nd half corner), TKS, 2TRS, TKS, 2TRS, 3TKS, 2TRS, TKS, 2TRS, TKS, (1st half corner),
(2nd half corner), TKS, 2TRS, TKS, 2TRS, 3TKS, 2TRS, TKS, 2TRS, TKS, (1st half corner)

Round 11

(2nd half corner), TKS, 2TRS, TKS, 9TRS, TKS, 2TRS, TKS, (1st half corner),
(2nd half corner), TKS, 2TRS, TKS, 9TRS, TKS, 2TRS, TKS, (1st half corner),
(2nd half corner), TKS, 2TRS, TKS, 9TRS, TKS, 2TRS, TKS, (1st half corner),
(2nd half corner), TKS, 2TRS, TKS, 9TRS, TKS, 2TRS, TKS, (1st half corner)

Round 12

(2nd half corner), TKS, 2TRS, TKS, 2TRS, 2TKS, 3TRS, 2TKS, 2TRS, TKS, 2TRS, TKS,
(1st half corner),

(2nd half corner), TKS, 2TRS, TKS, 2TRS, 2TKS, 3TRS, 2TKS, 2TRS, TKS, 2TRS, TKS,
(1st half corner),

(2nd half corner), TKS, 2TRS, TKS, 2TRS, 2TKS, 3TRS, 2TKS, 2TRS, TKS, 2TRS, TKS,
(1st half corner),

(2nd half corner), TKS, 2TRS, TKS, 2TRS, 2TKS, 3TRS, 2TKS, 2TRS, TKS, 2TRS, TKS,
(1st half corner)

Round 13

(2nd half corner), TKS, 2TRS, TKS, 2TRS, TKS, 2TRS, TKS, TRS, TKS, 2TRS, TKS, 2TRS, TKS, 2TRS,
TKS, (1st half corner),

(2nd half corner), TKS, 2TRS, TKS, 2TRS, TKS, 2TRS, TKS, TRS, TKS, 2TRS, TKS, 2TRS, TKS, 2TRS,
TKS, (1st half corner),

(2nd half corner), TKS, 2TRS, TKS, 2TRS, TKS, 2TRS, TKS, TRS, TKS, 2TRS, TKS, 2TRS, TKS, 2TRS,
TKS, (1st half corner),

(2nd half corner), TKS, 2TRS, TKS, 2TRS, TKS, 2TRS, TKS, TRS, TKS, 2TRS, TKS, 2TRS, TKS, 2TRS,
TKS, (1st half corner)

Round 14

(2nd half corner), TKS, 3TRS, TKS, 5TRS, TKS, TRS, TKS, 5TRS, TKS, 3TRS, TKS, (1st half corner),

(2nd half corner), TKS, 3TRS, TKS, 5TRS, TKS, TRS, TKS, 5TRS, TKS, 3TRS, TKS, (1st half corner),

(2nd half corner), TKS, 3TRS, TKS, 5TRS, TKS, TRS, TKS, 5TRS, TKS, 3TRS, TKS, (1st half corner),

(2nd half corner), TKS, 3TRS, TKS, 5TRS, TKS, TRS, TKS, 5TRS, TKS, 3TRS, TKS, (1st half corner)

Round 15

(2nd half corner), TKS, 5TRS, TKS, 3TRS, TKS, 3TRS, TKS, 3TRS, TKS, 5TRS, TKS,
(1st half corner),

(2nd half corner), TKS, 5TRS, TKS, 3TRS, TKS, 3TRS, TKS, 3TRS, TKS, 5TRS, TKS,
(1st half corner),

(2nd half corner), TKS, 5TRS, TKS, 3TRS, TKS, 3TRS, TKS, 3TRS, TKS, 5TRS, TKS,
(1st half corner),

(2nd half corner), TKS, 5TRS, TKS, 3TRS, TKS, 3TRS, TKS, 3TRS, TKS, 5TRS, TKS,
(1st half corner)

Round 16

(2nd half corner), TKS, 7TRS, 3TKS, 5TRS, 3TKS, 7TRS, TKS, (1st half corner),
(2nd half corner), TKS, 7TRS, 3TKS, 5TRS, 3TKS, 7TRS, TKS, (1st half corner),
(2nd half corner), TKS, 7TRS, 3TKS, 5TRS, 3TKS, 7TRS, TKS, (1st half corner),
(2nd half corner), TKS, 7TRS, 3TKS, 5TRS, 3TKS, 7TRS, TKS, (1st half corner)

Round 17

(2nd half corner), TKS, 27TRS, TKS, (1st half corner),
(2nd half corner), TKS, 27TRS, TKS, (1st half corner),
(2nd half corner), TKS, 27TRS, TKS, (1st half corner),
(2nd half corner), TKS, 27TRS, TKS, (1st half corner)

Round 18

(2nd half corner), 2TKS, 8TRS, 3TKS, 5TRS, 3TKS, 8TRS, 2TKS, (1st half corner),
(2nd half corner), 2TKS, 13TRS, TKS, 13TRS, 2TKS, (1st half corner),
(2nd half corner), 2TKS, 8TRS, 3TKS, 5TRS, 3TKS, 8TRS, 2TKS, (1st half corner),
(2nd half corner), 2TKS, 27TRS, 2TKS, (1st half corner)

Round 19

(2nd half corner), TKS, TRS, 2TKS, 6TRS, TKS, 3TRS, TKS, 3TRS, TKS, 3TRS, TKS, 6TRS, 2TKS,
TRS, TKS, (1st half corner),
(2nd half corner), TKS, TRS, 2TKS, 11TRS, 3TKS, 11TRS, 2TKS, TRS, TKS, (1st half corner),
(2nd half corner), TKS, TRS, 2TKS, 6TRS, TKS, 3TRS, TKS, 3TRS, TKS, 3TRS, TKS, 6TRS, 2TKS,
TRS, TKS, (1st half corner),
(2nd half corner), TKS, TRS, 2TKS, 25TRS, 2TKS, TRS, TKS, (1st half corner)

Round 20

(2nd half corner), 2TKS, 2TRS, 2TKS, 4TRS, TKS, 5TRS, TKS, TRS, TKS, 5TRS, TKS, 4TRS, 2TKS,
2TRS, 2TKS, (1st half corner),
(2nd half corner), 2TKS, 2TRS, 2TKS, 9TRS, TKS, TRS, TKS, TRS, TKS, 9TRS, 2TKS, 2TRS, 2TKS,
(1st half corner),
(2nd half corner), 2TKS, 2TRS, 2TKS, 4TRS, TKS, 5TRS, TKS, TRS, TKS, 5TRS, TKS, 4TRS, 2TKS,
2TRS, 2TKS, (1st half corner),
(2nd half corner), 2TKS, 2TRS, 2TKS, 23TRS, 2TKS, 2TRS, 2TKS, (1st half corner)

Round 21

(2nd half corner), TKS, TRS, 2TKS, 2TRS, 2TKS, 3TRS, TKS, 2TRS, TKS, 2TRS, TKS, TRS, TKS, 2TRS, TKS, 2TRS, TKS, 3TRS, 2TKS, 2TRS, 2TKS, TRS, TKS, (1st half corner),

(2nd half corner), TKS, TRS, 2TKS, 2TRS, 2TKS, 7TRS, TKS, 2TRS, TKS, 2TRS, TKS, 7TRS, 2TKS, 2TRS, 2TKS, TRS, TKS, (1st half corner),

(2nd half corner), TKS, TRS, 2TKS, 2TRS, 2TKS, 3TRS, TKS, 2TRS, TKS, 2TRS, TKS, TRS, TKS, 2TRS, TKS, 2TRS, TKS, 3TRS, 2TKS, 2TRS, 2TKS, TRS, TKS, (1st half corner),

(2nd half corner), TKS, TRS, 2TKS, 2TRS, 2TKS, 21TRS, 2TKS, 2TRS, 2TKS, TRS, TKS, (1st half corner)

Round 22

(2nd half corner), 2TKS, 2TRS, 2TKS, 2TRS, 2TKS, 3TRS, 2TKS, 3TRS, TKS, TRS, TKS, 3TRS, 2TKS, 3TRS, 2TKS, 2TRS, 2TKS, 2TRS, 2TKS, (1st half corner),

(2nd half corner), 2TKS, 2TRS, 2TKS, 2TRS, 2TKS, 5TRS, TKS, 3TRS, TKS, 3TRS, TKS, 5TRS, 2TKS, 2TRS, 2TKS, 2TRS, 2TKS, (1st half corner),

(2nd half corner), 2TKS, 2TRS, 2TKS, 2TRS, 2TKS, 3TRS, 2TKS, 3TRS, TKS, TRS, TKS, 3TRS, 2TKS, 3TRS, 2TKS, 2TRS, 2TKS, 2TRS, 2TKS, (1st half corner),

(2nd half corner), 2TKS, 2TRS, 2TKS, 2TRS, 2TKS, 19TRS, 2TKS, 2TRS, 2TKS, 2TRS, 2TKS, (1st half corner)

Round 23

(2nd half corner), 4TKS, 2TRS, 2TKS, 2TRS, 2TKS, 7TRS, TKS, TRS, TKS, 7TRS, 2TKS, 2TRS, 2TKS, 2TRS, 4TKS, (1st half corner),

(2nd half corner), 4TKS, 2TRS, 2TKS, 2TRS, 2TKS, 3TRS, TKS, 3TRS, 3TKS, 3TRS, TKS, 3TRS, 2TKS, 2TRS, 2TKS, 2TRS, 4TKS, (1st half corner),

(2nd half corner), 4TKS, 2TRS, 2TKS, 2TRS, 2TKS, 7TRS, TKS, TRS, TKS, 7TRS, 2TKS, 2TRS, 2TKS, 2TRS, 4TKS, (1st half corner),

(2nd half corner), 4TKS, 2TRS, 2TKS, 2TRS, 2TKS, 17TRS, 2TKS, 2TRS, 2TKS, 2TRS, 4TKS, (1st half corner)

BINDING OFF

There are many ways to bind off, I worked as followed:

Make all the return stitches leaving 1 loop of color 2 on hook. Insert hook as a **TKS**, YO color 1 and PT stitches and loop on the hook (slipstitch) (1 loop on the hook). **DO NOT** increase on the corners! Close the round with slipstitch in the first slipstitch.

Weave in the ends.

Make this square 4 times.

FINISHING THE BLANKET

Weave in all ends and sew the blocks together. I used the mattress stitch and the bind off row to sew the blocks together. When I saw the finished piece I decided to make a very simple border of single crochet (US-term), but you can make any border which you like.

MY BORDER

You make a stitch in every stitch. The corners must be made in 2 stitches (2 single crochets in 1 stitch). Make as many rounds as you like, I only made 2 rounds of single crochet but you have yarn for at least 4 rows.

HONEY COMB BORDER

As an extra option, I have included the most lovely, non curling border, there is. The photos are from my Winter CAL. It is worked in the round, just like you made the squares.

FOUNDATION ROW

You start at one of the corners with a 2nd half corner. Pick up loops like you made TRS (this way the Bind Off Row of the squares stay visible).

Pick up a loop in every stitch of the squares (I did not pick up a loop between the squares, but you have to see if that is also good for your work).



ROUND 2

Before and after every corner you need to pick up 1 TKS to hide the spiral-look.

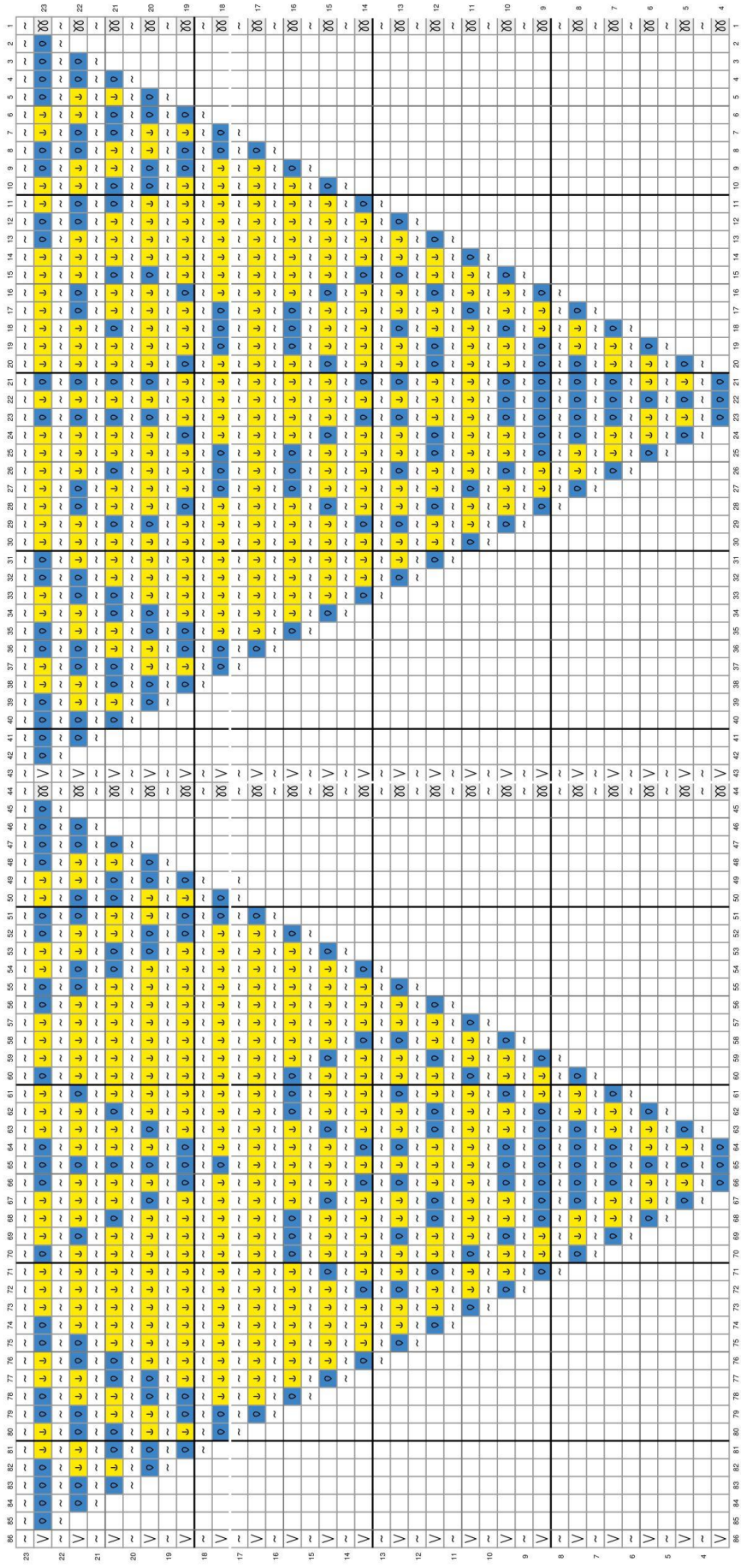
(2nd half corner), 1 TKS , *1 TPS / 1 TSS* repeat the 2 stitches until you reach the corner of the a corner previous row.







Make a TKS in the TKS of the previous row/corner.

(1st half corner), (2nd half corner), TKS, *1 TPS / 1 TSS*

Repeat this until you have enough rounds (at least 3) end with a (1st half corner) and make the bind of row.





-  No Stitch
-  2nd half corner
-  TKS
-  TRS
-  Return
-  1st half corner

